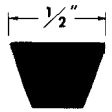


TWO GROOVE SHEAVES FOR "4L" OR "A" BELTS

"3L" Belts may be used with These Sheaves as Indicated in Table Below



A

TABLE No. 1

STOCK SIZES - FINISHED BORE

PART No.	DIAMETER			TYPE	STOCK BORES MARKED "X"										DIMENSIONS				WT. LBS.
	OUTSIDE	DATUM "A"	PITCH "3L"		1/2"	5/8"	3/4"	7/8"	15/16"	1"	1 1/8"	1 3/16"	1 3/8"	1 7/16"	F	L	P	C	
2AK20	2.00	1.80	1.46	1	X	X	X								1.375	1.66	0.47	0.19	0.89
2AK21	2.15	1.90	1.56	1	X	X	X								1.375	1.66	0.47	0.19	0.88
2AK22	2.25	2.00	1.66	1	X	X	X	X							1.375	1.66	0.47	0.19	1
2AK23	2.35	2.10	1.76	1		X	X	X	X						1.375	1.66	0.47	0.19	1.15
2AK25	2.55	2.30	1.96	1		X	X	X	X	X					1.375	1.66	0.47	0.19	1.23
2AK26	2.65	2.40	2.06	1		X	X	X	X	X					1.375	1.66	0.47	0.19	1.55
2AK27	2.75	2.50	2.16	1		X	X	X	X	X					1.375	1.66	0.47	0.19	1.6
2AK28	2.85	2.60	2.26	1		X	X	X	X	X					1.375	1.66	0.47	0.19	1.8
2AK30	3.05	2.80	2.46	1	X	X	X	X	X	X					1.375	1.66	0.47	0.19	2
2AK32	3.25	3.00	2.66	1		X	X	X	X	X	X				1.375	1.66	0.47	0.19	2.2
2AK34	3.45	3.20	2.86	1		X	X	X	X	X	X				1.375	1.65	0.47	0.19	2.45
2AK39	3.75	3.50	3.16	2		X	X	X	X	X	X				1.375	1.34	0.47	0.5	2.04
2AK41	3.95	3.70	3.36	2		X	X	X	X	X	X				1.375	1.34	0.47	0.5	2.95
2AK44	4.25	4.00	3.66	2		X	X	X	X	X	X				1.375	1.34	0.47	0.5	3.15
2AK46	4.45	4.20	3.86	2		X	X	X	X	X	X				1.375	1.34	0.47	0.5	3.93
2AK49	4.75	4.50	4.16	2			X	X	X	X		X			1.375	1.34	0.47	0.5	3.83
2AK51	4.95	4.70	4.36	2			X	X	X	X		X			1.375	1.34	0.47	0.5	4.45
2AK54	5.25	5.00	4.66	3		X	X	X	X	X		X			1.375	1.34	0.47	0.5	3.72
2AK56	5.45	5.20	4.86	3		X	X	X	X	X		X			1.375	1.34	0.47	0.5	3.75
2AK59	5.75	5.50	5.16	3			X	X	X	X		X			1.375	1.34	0.47	0.5	3.97
2AK61	5.95	5.70	5.36	3			X	X	X	X		X			1.375	1.34	0.47	0.5	3.95
2AK64	6.25	6.00	5.66	3			X	X	X	X	X	X	X		1.375	1.59	0.34	0.13	4.97
2AK74	7.25	7.00	6.66	3			X	X	X	X	X	X	X		1.375	1.59	0.34	0.13	5.41
2AK84	8.25	8.00	7.66	3			X	X	X	X	X	X	X		1.375	1.59	0.34	0.13	7.6
2AK94	9.25	9.00	8.66	3			X	X	X	X	X	X	X		1.375	1.59	0.34	0.13	7.48
2AK104	10.25	10.00	9.66	3			X	X	X	X	X	X	X		1.375	1.59	0.34	0.13	8.99
2AK114	11.25	11.00	10.66	3			X	X	X	X	X	X	X		1.375	1.59	0.34	0.12	8.92
2AK124	12.25	12.00	11.66	3			X	X	X	X	X	X	X		1.375	1.59	0.34	0.13	11.52
2AK134	13.25	13.00	12.66	3			X	X	X	X	X	X	X		1.375	1.59	0.34	0.13	11.88
2AK144	14.25	14.00	13.66	3				X	X	X	X	X	X		1.375	1.59	0.34	0.13	11.17
2AK154	15.25	15.00	14.66	3					X	X	X	X	X		1.375	1.59	0.53	0.32	14.22
2AK184	18.25	18.00	17.66	3						X	X	X	X		1.375	1.59	0.53	0.31	18.33

HOLLOW HEAD SETSCREWS

PAINTED
STATICALLY BALANCED



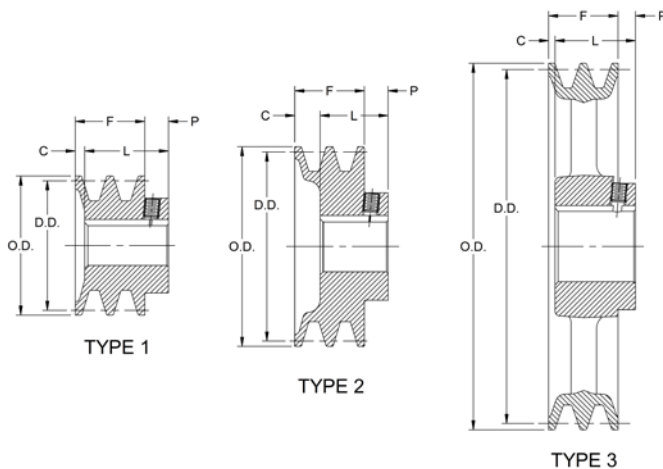
INDIVIDUALLY PACKAGED

CLOSE GRAINED CAST IRON

STANDARD KEYSEATS

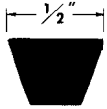
TABLE No. 2

BORE RANGE	KEYSEAT
1/2"	None
5/8" to 7/8"	3/16" x 3/32"
15/16 to 1 1/4	1/4 x 1/8
1 7/16	3/8 x 3/16



TWO GROOVE SHEAVES FOR "4L" OR "A" BELTS

"3L" Belts may also be used with These Sheaves as Indicated in Table Below



STOCK SIZES -WITH SPLIT TAPER BUSHINGS

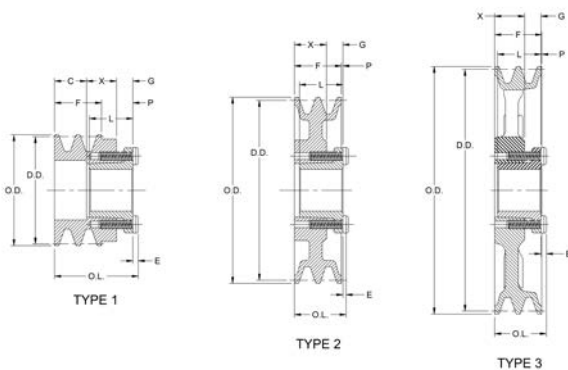
TABLE No.1

PART NO.	DIAMETERS			TYPE	DIMENSIONS								WT. LESS BUSH.
	O.D.	DATUM "A"	PITCH "3L"		O.L.	F	L	P	C	X	G	E	
2AK30H	3.05	2.80	2.46	1	2.40	1.38	1.25	0.87	0.94	0.88	0.43	0.16	1.62
2AK32H	3.25	3.00	2.66	1	2.40	1.38	1.25	0.87	0.94	0.88	0.43	0.16	1.88
2AK34H	3.45	3.20	2.86	1	1.97	1.38	1.25	0.43	0.50	0.88	0.43	0.16	1.52
2AK39H	3.75	3.50	3.16	1	1.97	1.38	1.25	0.43	0.50	0.88	0.43	0.16	1.90
2AK41H	3.95	3.70	3.36	2	1.47	1.38	1.25	-0.07	-	0.88	0.43	0.16	2.09
2AK44H	4.25	4.00	3.66	2	1.47	1.38	1.25	-0.07	-	0.88	0.43	0.16	2.59
2AK46H	4.45	4.20	3.86	2	1.47	1.38	1.25	-0.07	-	0.88	0.43	0.16	2.64
2AK49H	4.75	4.50	4.16	2	1.47	1.38	1.25	-0.07	-	0.88	0.43	0.16	3.13
2AK51H	4.95	4.70	4.36	2	1.47	1.38	1.25	-0.07	-	0.88	0.43	0.16	3.28
2AK54H	5.25	5.00	4.66	2	1.47	1.38	1.25	-0.07	-	0.88	0.43	0.16	3.29
2AK56H	5.45	5.20	4.86	2	1.47	1.38	1.25	-0.07	-	0.88	0.43	0.16	3.42
2AK59H	5.75	5.50	5.16	3	1.47	1.38	1.25	-0.07	-	0.88	0.43	0.16	3.52
2AK61H	5.95	5.70	5.36	3	1.47	1.38	1.25	-0.07	-	0.88	0.43	0.16	3.43
2AK64H	6.25	6.00	5.66	3	1.47	1.38	1.25	-0.07	-	0.88	0.43	0.16	3.89
2AK74H	7.25	7.00	6.66	3	1.47	1.38	1.25	-0.07	-	0.88	0.43	0.16	4.38
2AK84H	8.25	8.00	7.66	3	1.47	1.38	1.25	-0.07	-	0.88	0.43	0.16	5.99
2AK94H	9.25	9.00	8.66	3	1.47	1.38	1.25	-0.07	-	0.88	0.43	0.16	7.28
2AK104H	10.25	10.00	9.66	3	1.47	1.38	1.25	-0.07	-	0.88	0.43	0.16	8.40
2AK114H	11.25	11.00	10.66	3	1.47	1.38	1.25	-0.07	-	0.88	0.43	0.16	8.96
2AK124H	12.25	12.00	11.66	3	1.47	1.38	1.25	-0.07	-	0.88	0.43	0.16	10.21
2AK134H	13.25	13.00	12.66	3	1.47	1.38	1.25	-0.07	-	0.88	0.43	0.16	11.17
2AK144H	14.25	14.00	13.66	3	1.47	1.38	1.25	-0.06	-	0.88	0.43	0.16	12.21
2AK154H	15.25	15.00	14.66	3	1.46	1.38	1.25	-0.07	-	0.87	0.43	0.16	14.00
2AK184H	18.25	18.00	17.66	3	1.46	1.38	1.25	-0.07	-	0.87	0.43	0.16	14.54

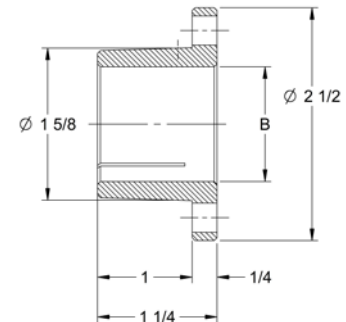
STATICALLY BALANCED



CLAMP FIT ON SHAFT



CLOSE GRAIN
CAST IRON



Part Numbers are specified by "H" and bore size.
Example: "H - 1 1/8"

*These sizes are furnished with special keys to fit standard depth keyseats.

TABLE No. H BUSHING

BUSHING	L	U	T	D		H	V	W	X	Y	R	S	BORE RANGE		CAP SCREWS		AVG. WT. LBS	WRENCH TORQUE IN-LBS	CAPSCREW HEAD PROJECTION
				LARGE END	SMALL END								No.	SIZE					
				TYPE 1	TYPE 2														
H	1 1/4	1/4	1	1.625	1.571	2 1/2	2	-	14/16	3/16	1/8	3/16	3/8 - 1 1/8	1 7/16 - 1 1/2	2	1/4-20 x 5/8	0.8	95	0.16